



Update on Major Projects

Albert V. Shelby, III
Director of Program Delivery

May 16, 2018



Sunbelt Parkway/ SR 133

CORRIDOR FACTS

- ◆ The Governor's Road Improvement Program, commonly referred to as GRIP, is a system of proposed economic developmental highways in Georgia. GRIP was originally adopted in 1989 by the Georgia General Assembly.
- ◆ The SR 133 corridor extends from Albany in Dougherty County to Valdosta in Lowndes County.
- ◆ SR 133 is a Freight Corridor
- ◆ Completed projects will provide **4-lanes** of roadway.
- ◆ The SR 133 corridor active projects are approximately **29 miles** in length.
- ◆ Design and engineering for the entire SR 133 corridor began in 2004.
- ◆ The current estimated cost to complete the active projects of the SR 133 corridor is **\$238,792,907**



Sunbelt Parkway/ SR 133

CORRIDOR LOCATION

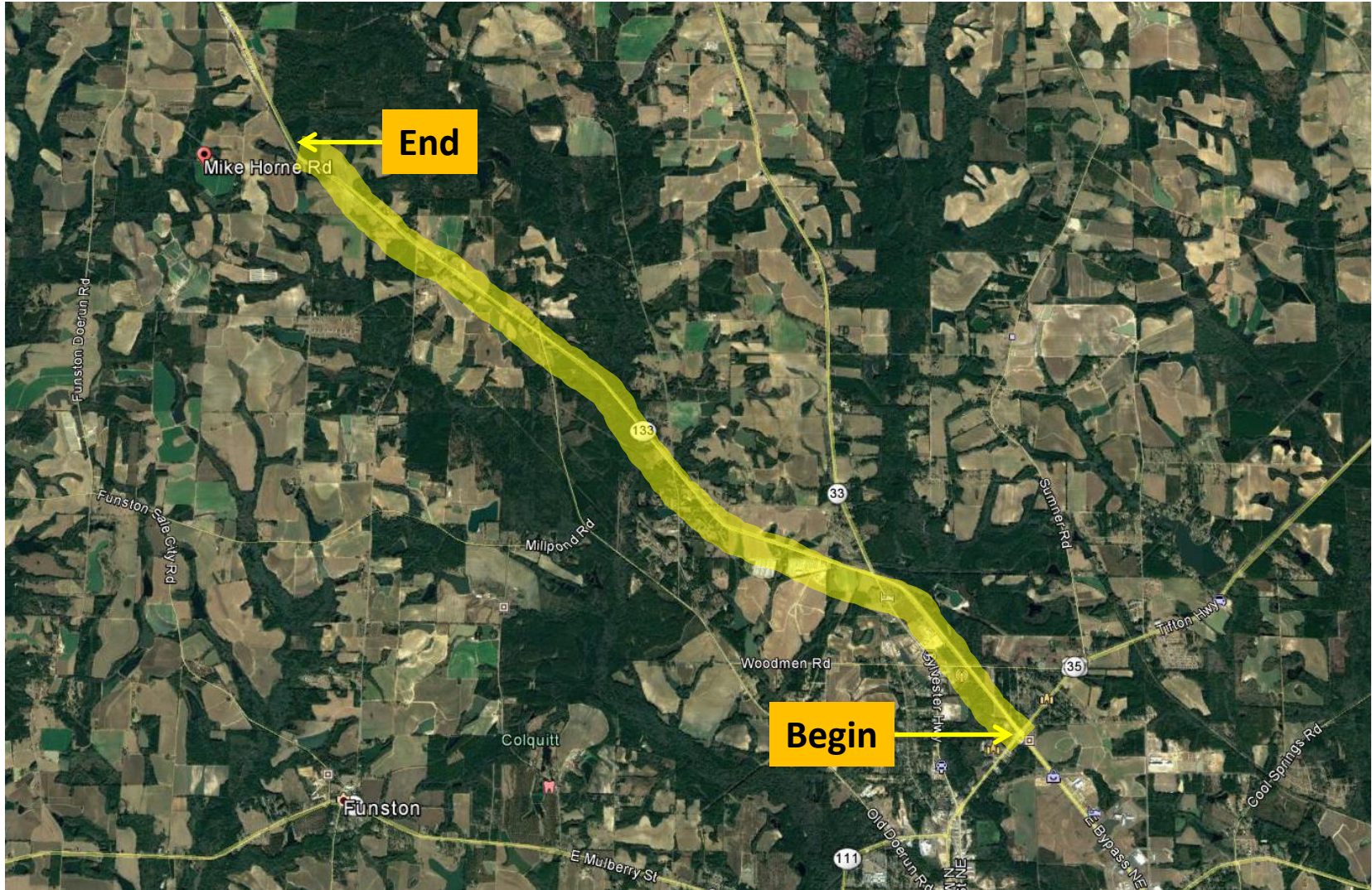




SR 133 FM S OF SR 35/US 319 TO CR 187/MIKE HORNE ROAD

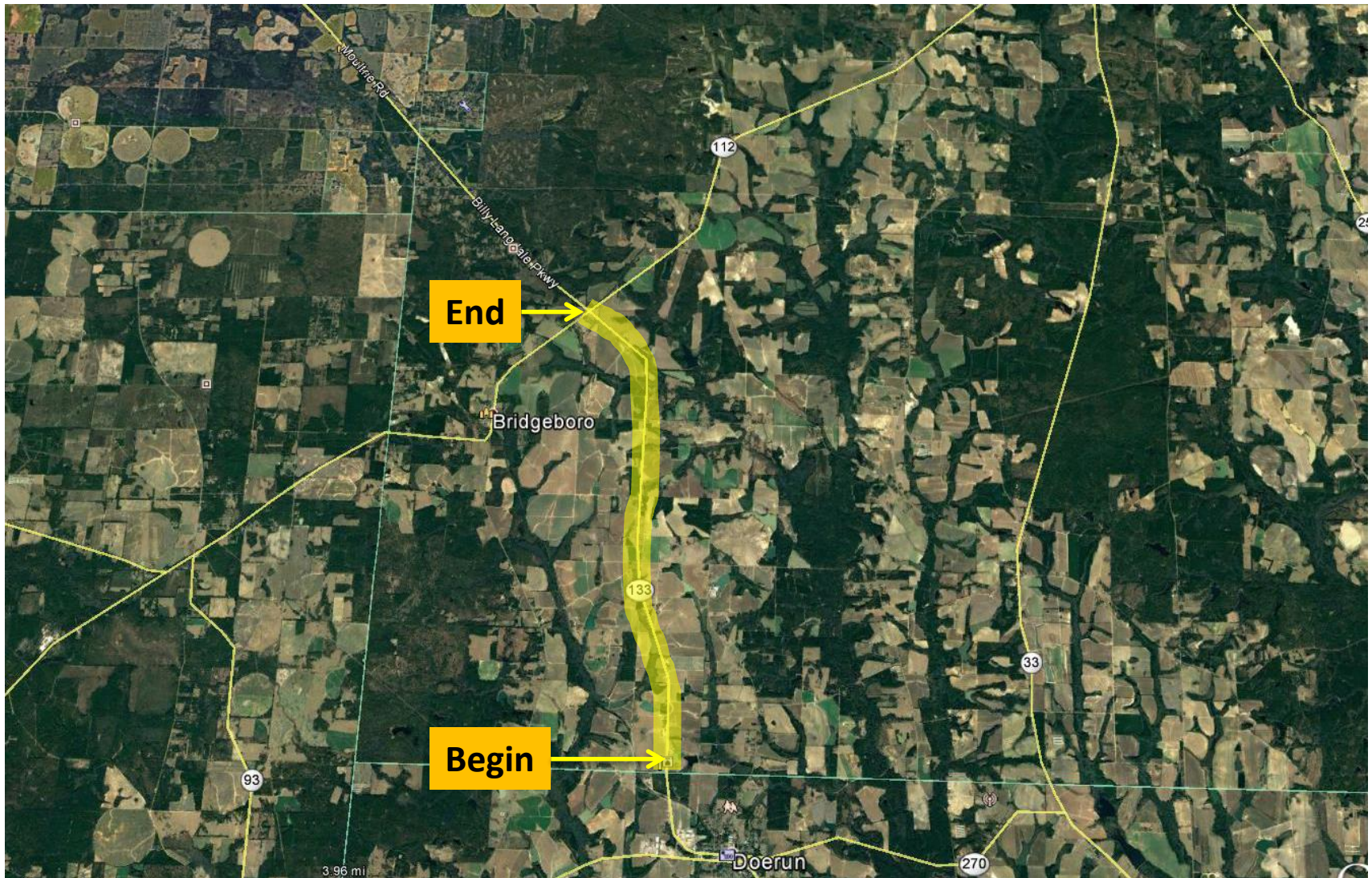
Widening Project in Colquitt County

Congressional District 8



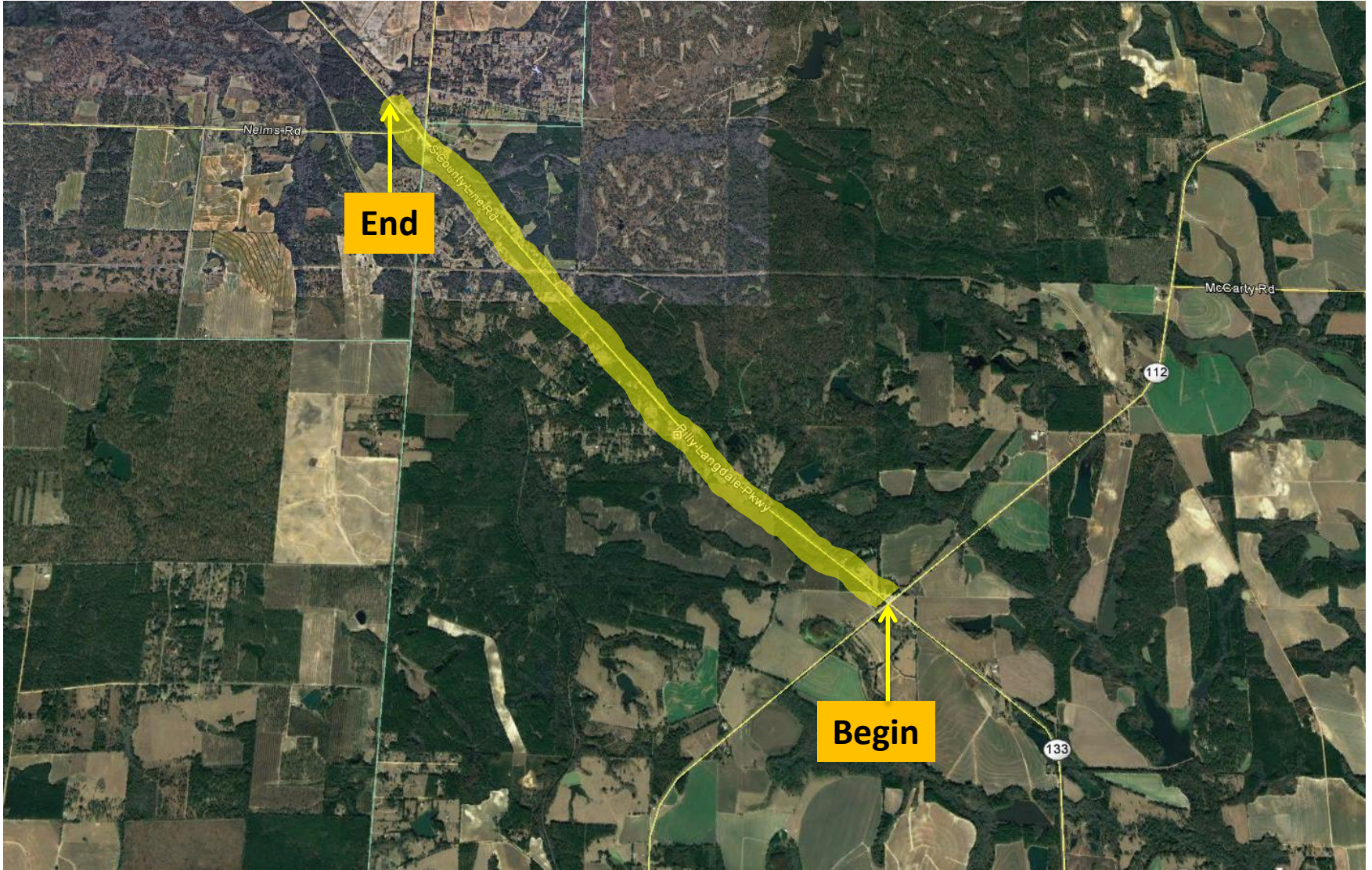


SR 133 FM N OF COLQUITT COUNTY LINE TO N OF SR 112 Widening Project in Worth County Congressional District 8



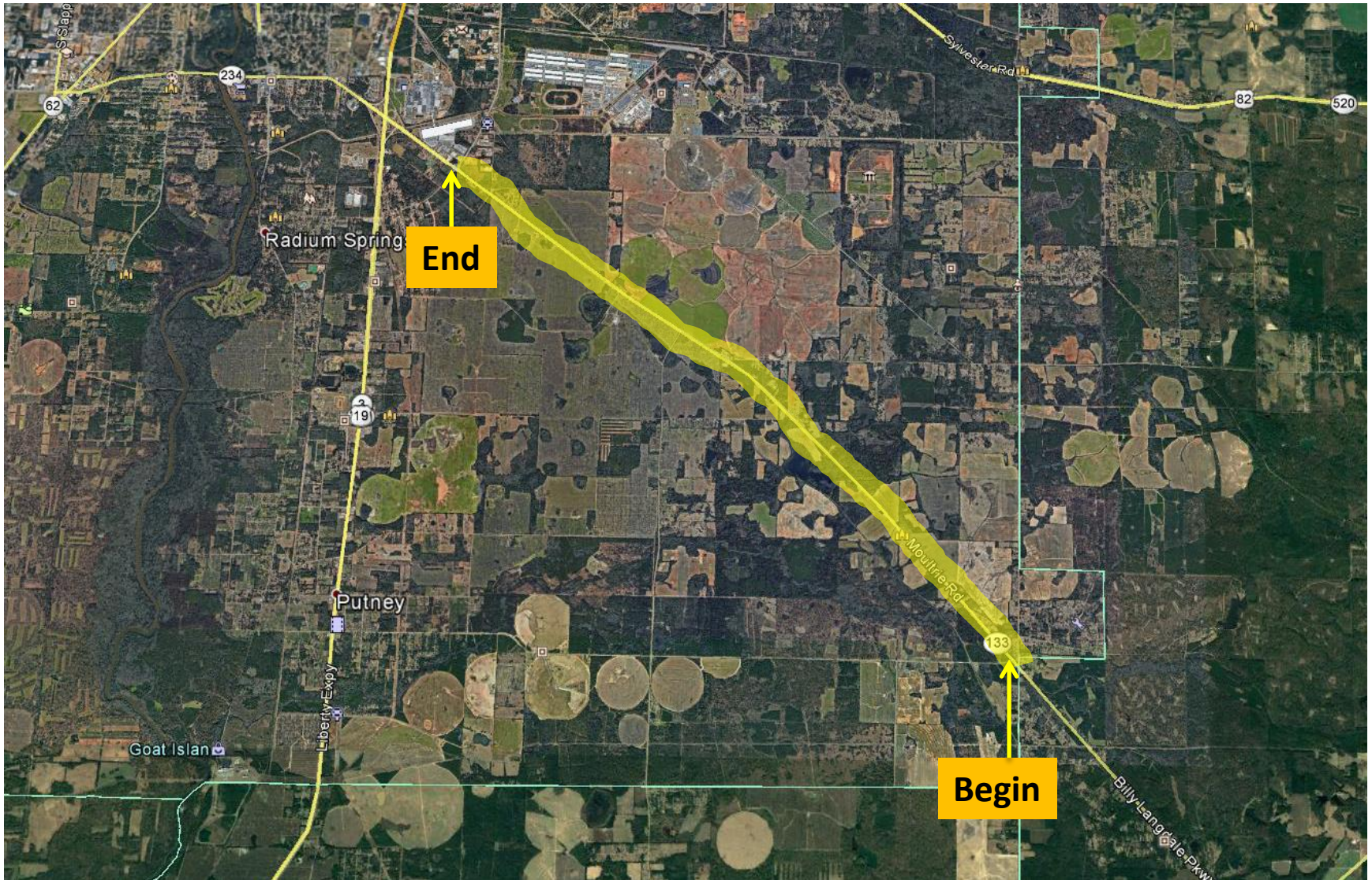


SR 133 FM N OF CR 459/COUNTYLINE ROAD TO N OF CR540/HOLLY DR Widening Project in Dougherty and Worth Counties Congressional Districts 2 and 8





SR 133 FM N OF CR 459/COUNTYLINE ROAD TO N OF CR540/HOLLY DR Widening Project in Dougherty County Congressional District 2





SR 20

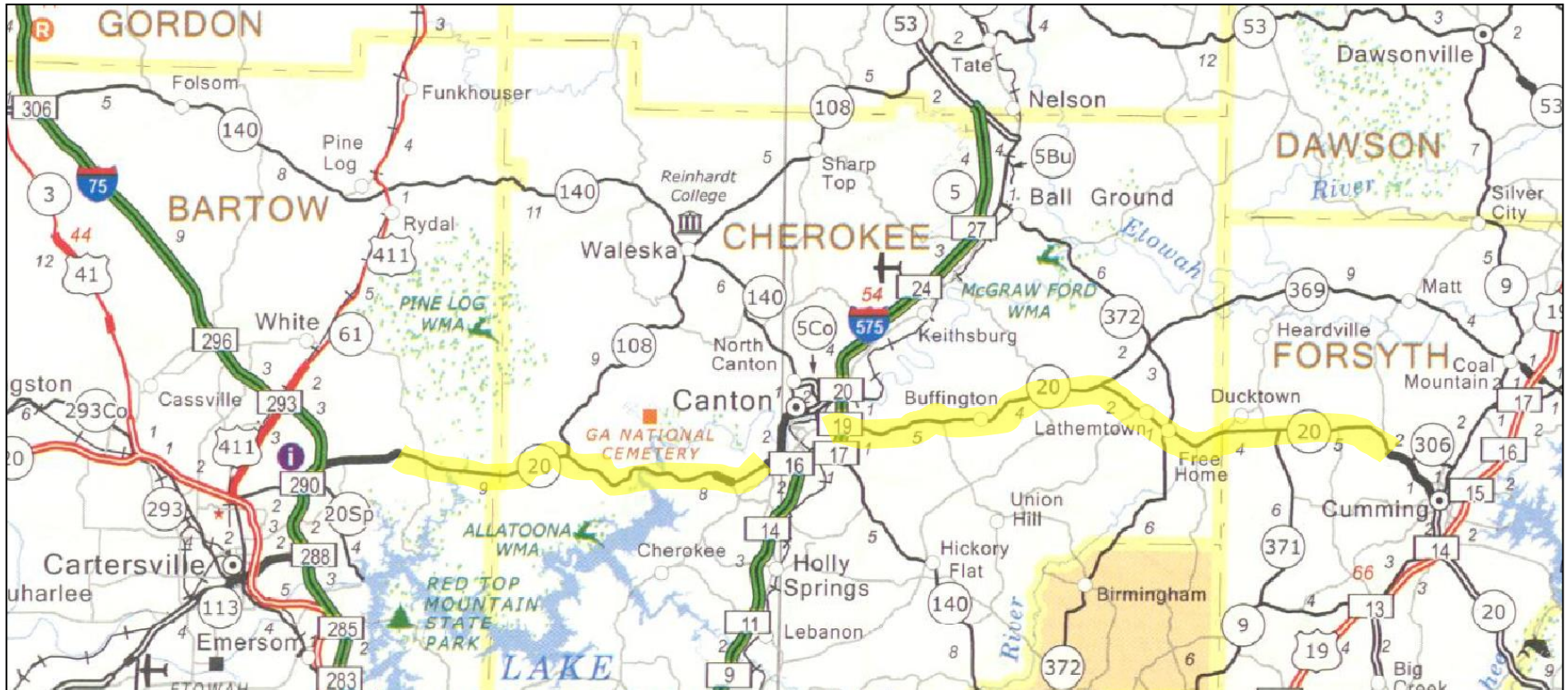
CORRIDOR FACTS

- ◆ The SR 20 corridor extends from Cartersville in Bartow County to Cumming in Forsyth County.
- ◆ These projects propose to alleviate congestion, improve east/west mobility, and reduce crash frequency along the SR 20 corridor.
- ◆ Completed projects will provide **4-lanes** of roadway.
- ◆ The SR 20 corridor is approximately **39.23 miles** in length.
- ◆ Design and engineering for the entire SR 20 corridor began in 2006.
- ◆ *The current estimated cost to complete the four-lane construction of the SR 20 corridor is **\$818,157,069***



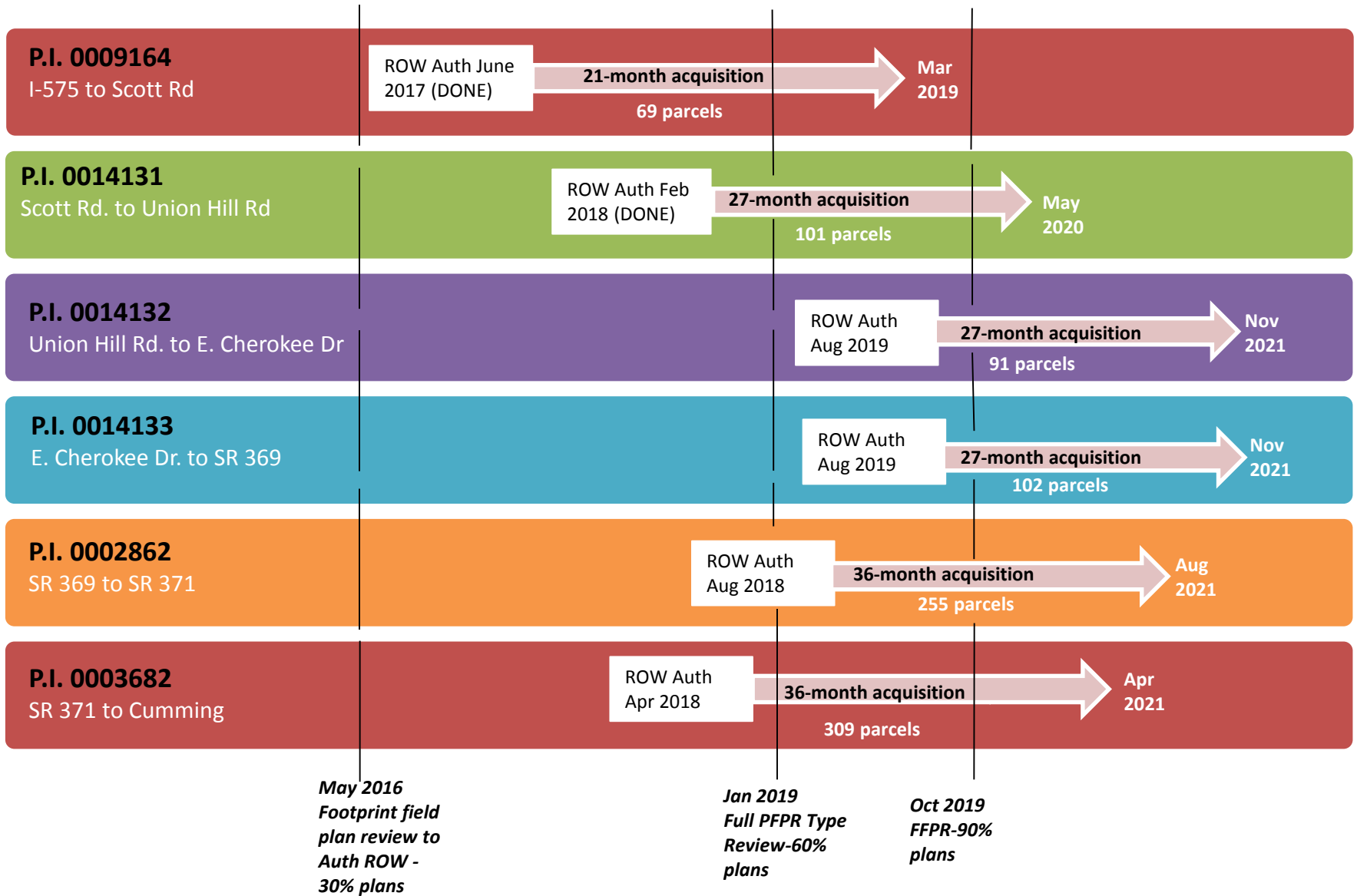
SR 20

CORRIDOR LOCATION





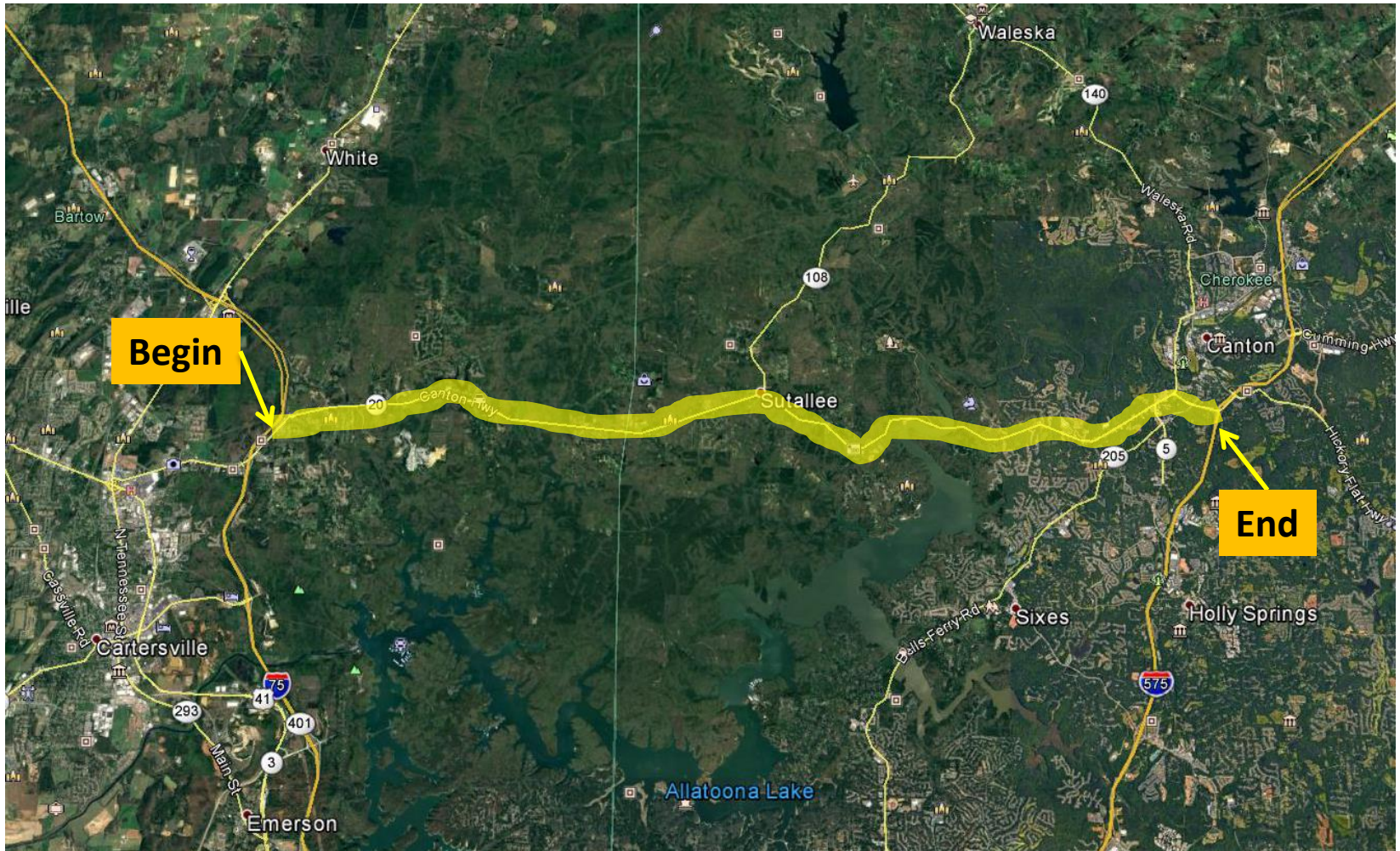
SR 20 CORRIDOR



**ROW Auth based on ROW funding dates from Planning



SR 20 FROM 1-75/BARTOW TO I-575/CHEROKEE Widening Project in Bartow and Cherokee Counties Congressional District 11



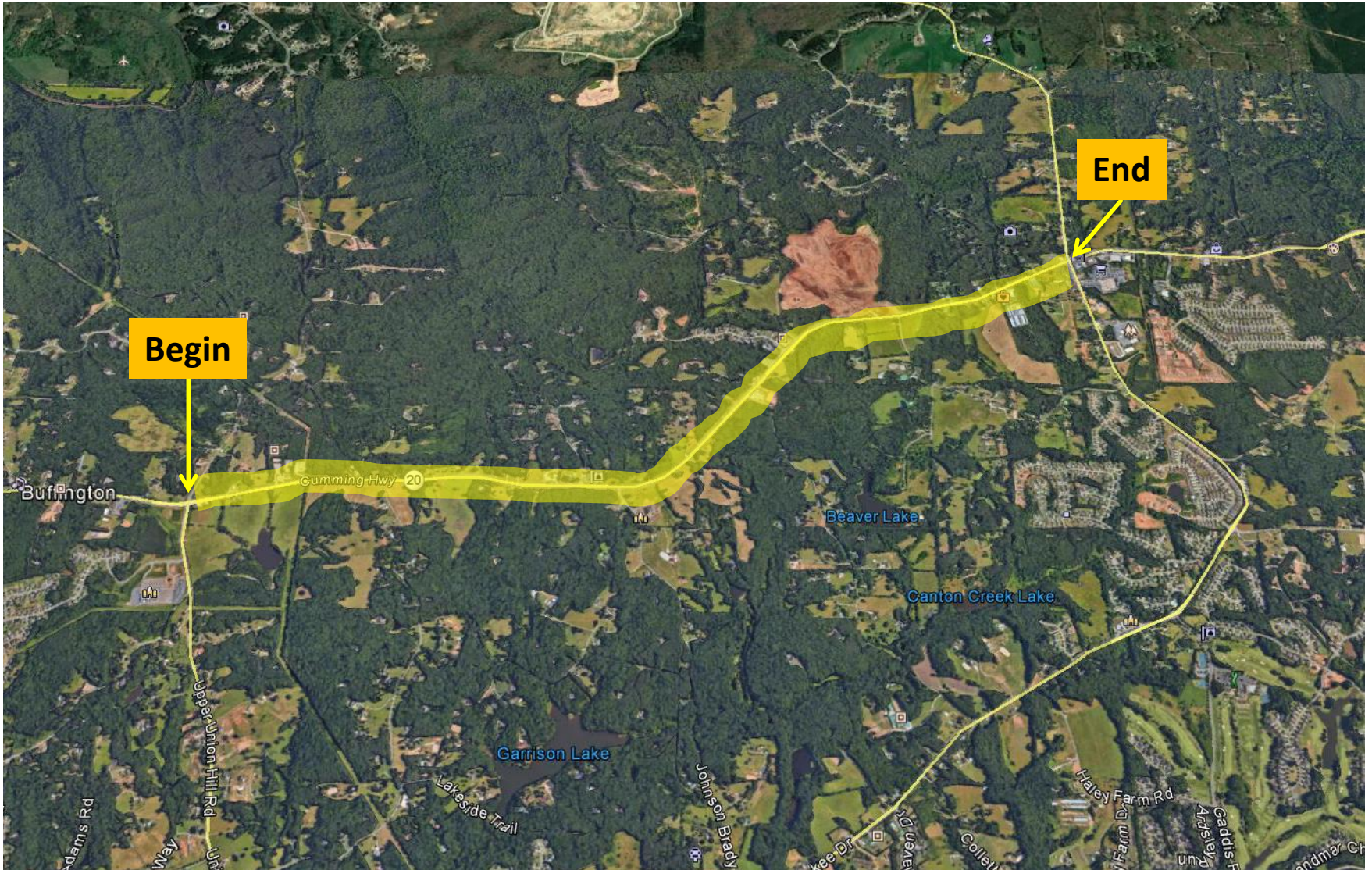


SR 20 FROM CR 281/SCOTT RD TO CR 762/UNION HILL ROAD Widening Project in Cherokee County Congressional District 11





SR 20 FROM CR 762/UNION HILL ROAD TO CR 765/EAST CHEROKEE DR Widening Project in Cherokee County Congressional District 11



SR 20 FROM CR 765/EAST CHEROKEE DR TO SR 369 Widening Project in Cherokee County Congressional District 11





SR 20 FROM SR 369/CHEROKEE TO SR 371/FORSYTH Widening Project in Cherokee and Forsyth Counties Congressional District 11





SR 20 FROM SR 371 TO E OF CS 579/NORTH CORNERS PKWY Widening Project in Forsyth County Congressional Districts 7 and 9





SR 92

CORRIDOR FACTS

- ◆ The SR 92 corridor extends from Paulding County to Cobb County.
- ◆ These projects propose to alleviate congestion, improve east/west mobility, and reduce crash frequency along the SR 92 corridor.
- ◆ Completed projects will provide **4-lanes** of roadway.
- ◆ The SR 92 corridor is approximately **7.8 miles** in length.
- ◆ Design and engineering for the entire SR 92 corridor began in 2006
- ◆ *The current estimated cost to complete the four-lane construction of the SR 92 corridor is **\$123,874,248***



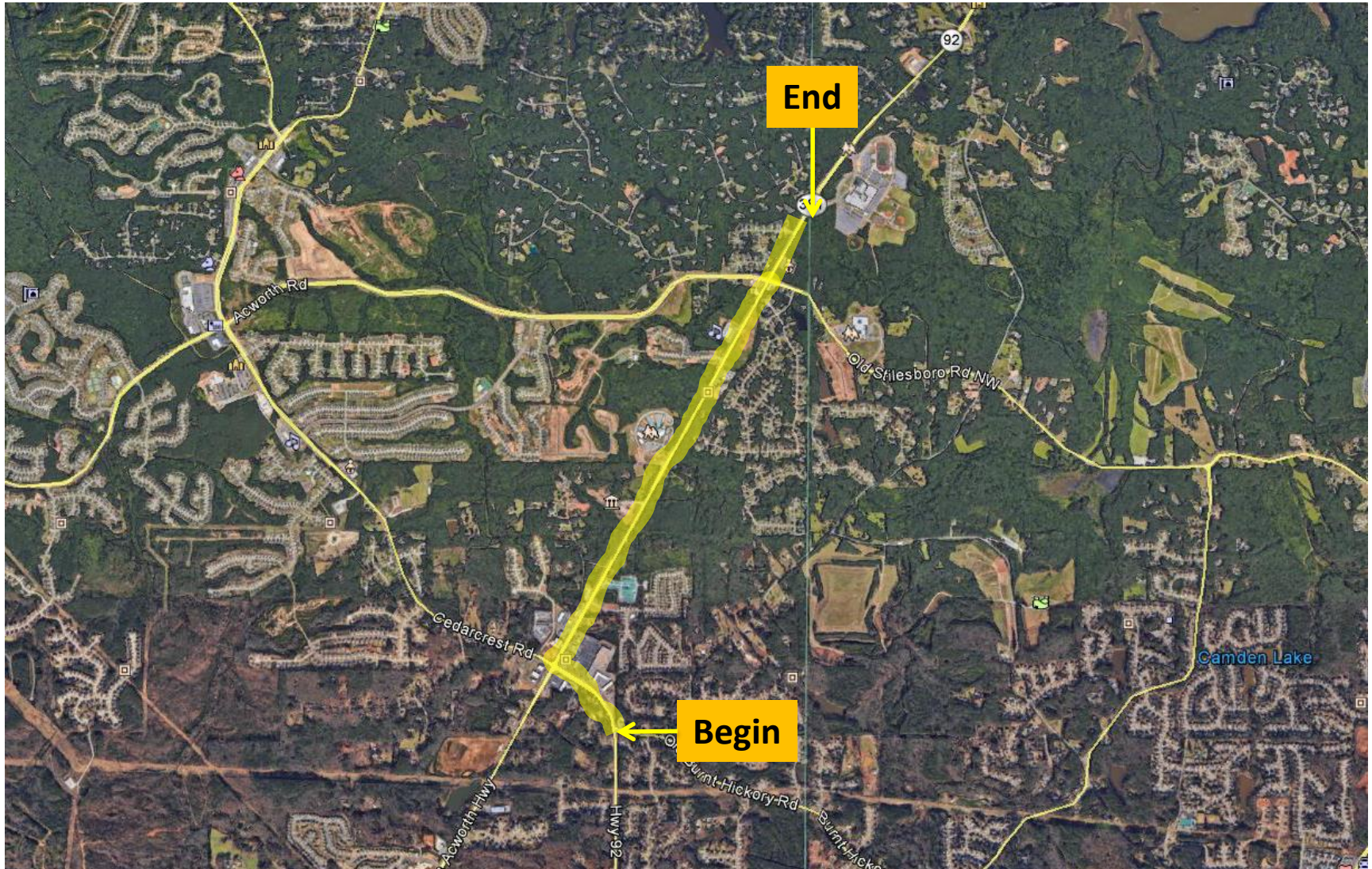
SR 92

CORRIDOR LOCATION



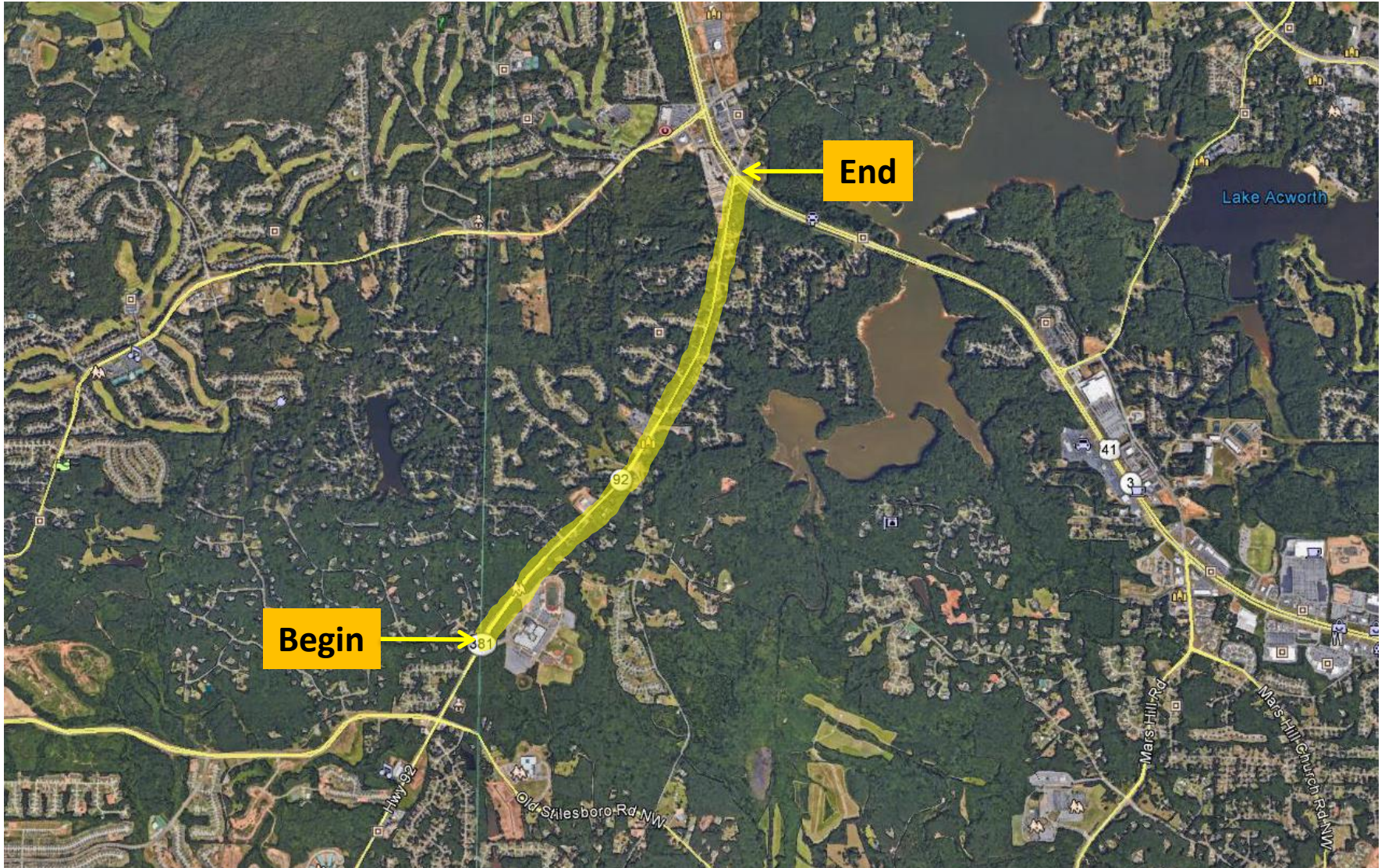


SR 92 FROM OLD BURNT HICKORY ROAD TO PICKETTS MILL PLACE Widening Project in Paulding County Congressional District 14



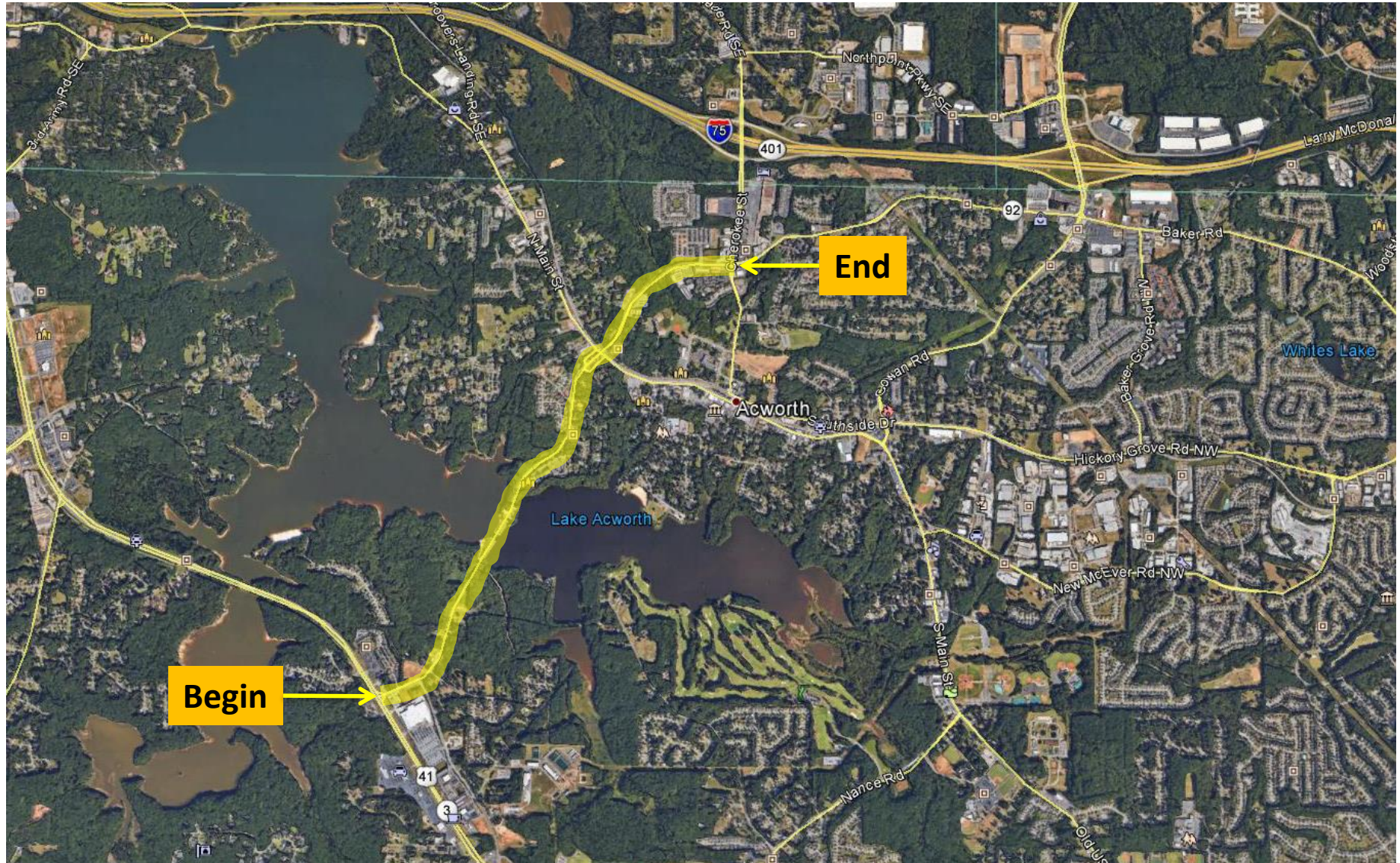


SR 92 FROM PICKETTS MILL PLACE TO SR 3/US 41 Widening Project in Cobb County Congressional District 11





SR 92 FROM SR 3/US 41 TO GLADE ROAD Widening Project in Cobb County Congressional District 11

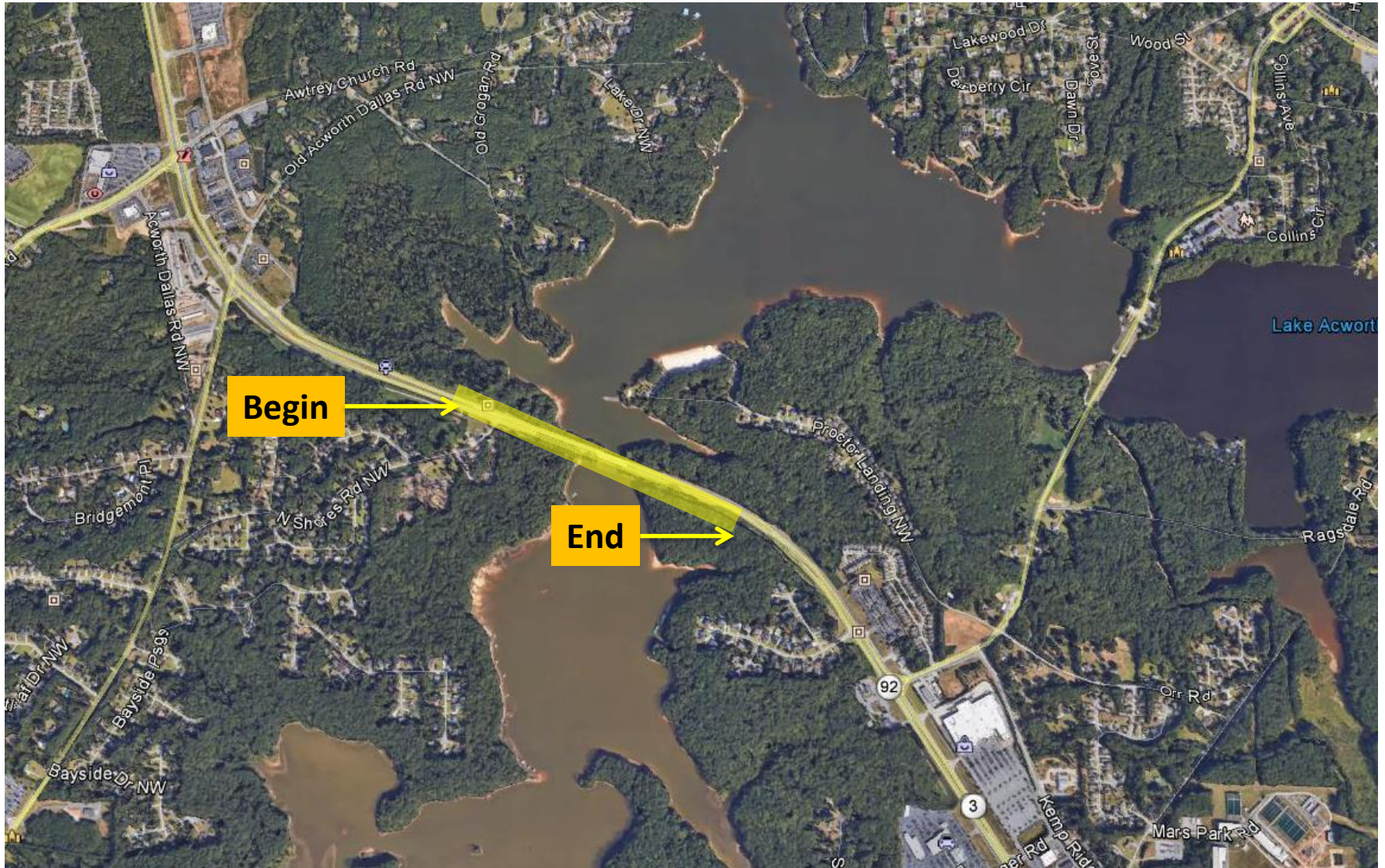




SR 92 @ PROCTOR CREEK/LAKE ACWORTH IN SW ACWORTH

Bridge Replacement Project in Cobb County

Congressional District 11





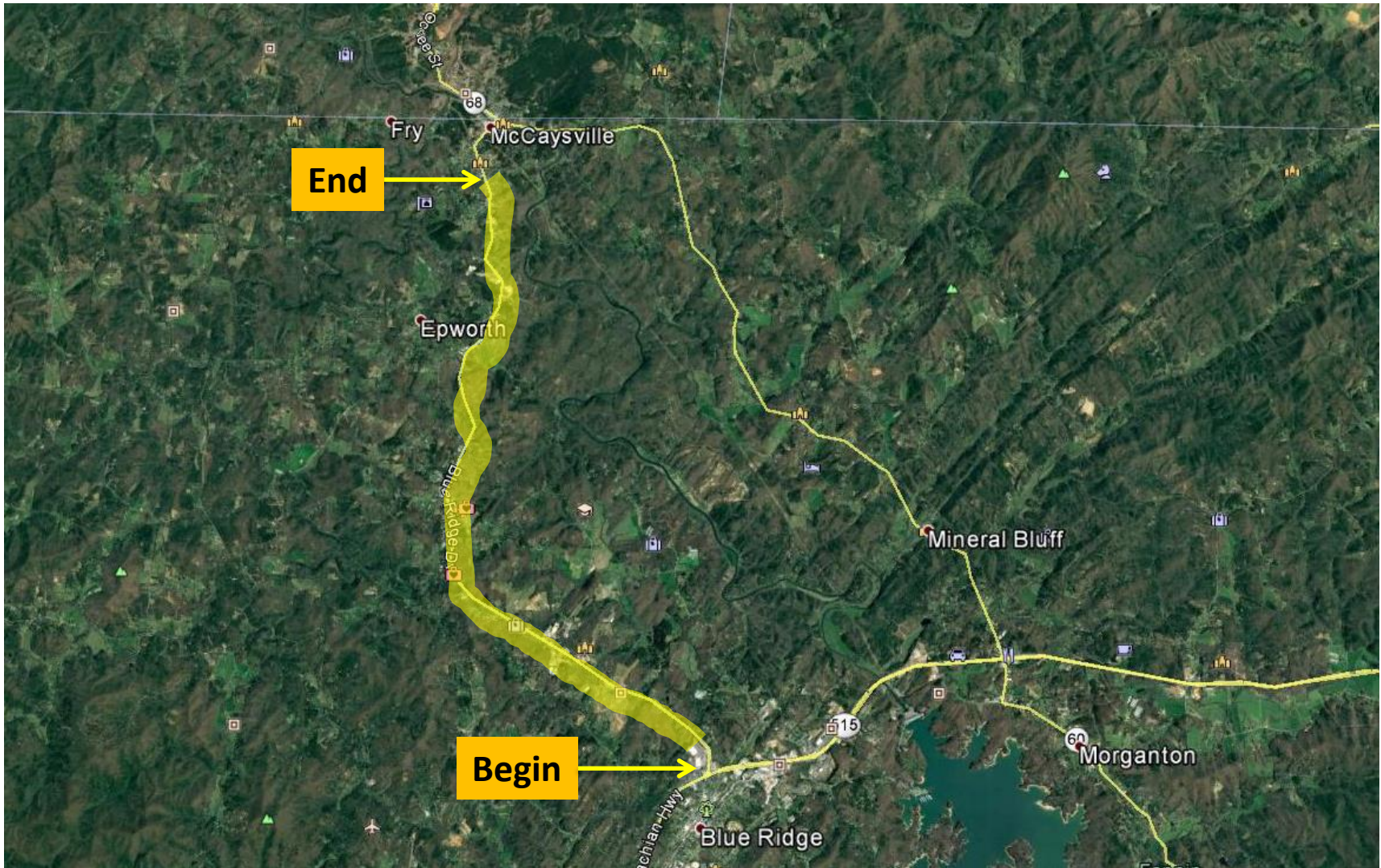
SR 5

CORRIDOR FACTS

- ◆ The SR 5 corridor extends from Blue Ridge towards McCaysville in Fannin County to the Tennessee State Line.
- ◆ These projects propose to alleviate congestion, improve north/south mobility, and reduce crash frequency along the SR 5 corridor.
- ◆ Completed projects will provide **4-lanes** of roadway.
- ◆ The SR 5 corridor is approximately **10.35 miles** in length.
- ◆ Design and engineering for the entire SR 20 corridor began in 1993.
- ◆ *The current estimated cost to complete the four-lane construction of the SR 5 corridor is **\$134,032,743***



SR 5 FROM N OF SR 2/US 76 TO OLD FLOWERS ROAD Widening Project in Fannin County Congressional District 9





MCCAYSVILLE BYPASS FROM SR 5 TO TENNESSEE STATE LINE New Location Project in Fannin County Congressional District 9





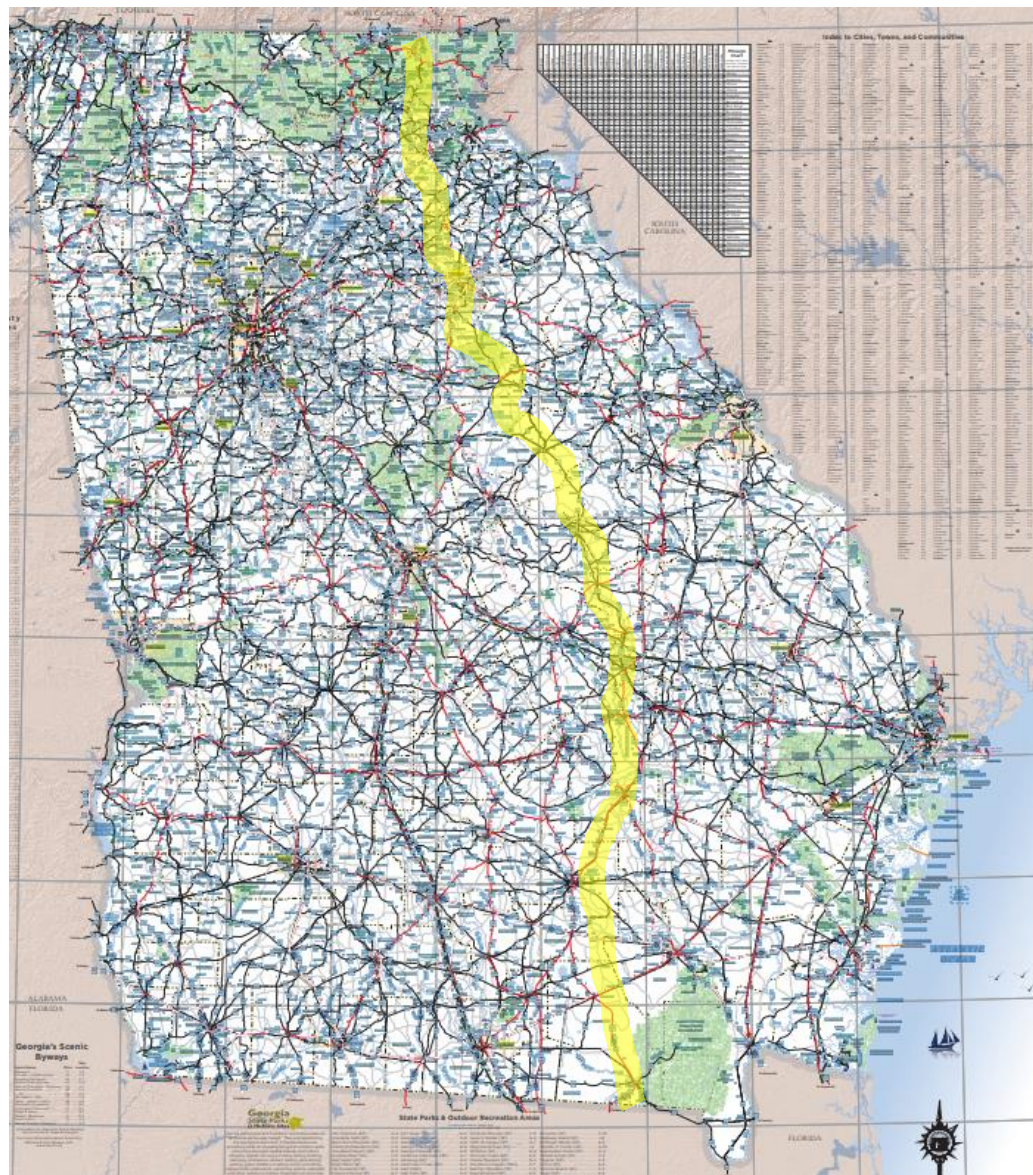
US 441

CORRIDOR FACTS

- ◆ The Governor's Road Improvement Program, commonly referred to as GRIP, is a system of proposed economic developmental highways in Georgia. GRIP was originally adopted in 1989 by the Georgia General Assembly.
- ◆ The US 441 corridor travels the length of the state beginning at the Florida State Line and extending to the North Carolina State Line.
- ◆ US 441 is a Freight Corridor
- ◆ The US 441 corridor is a major north/south transportation artery in the east/central part of Georgia.
- ◆ Completed projects will provide **4-lanes** of roadway, usually divided with a grass median.
- ◆ The US 441 corridor is approximately **371 miles** in length and is the longest of the GRIP corridors.
- ◆ The US 441 corridor active projects are approximately **54.7 miles** in length.
- ◆ The current estimated cost to complete the active projects of the US 441 corridor active projects is **\$382,480,558**

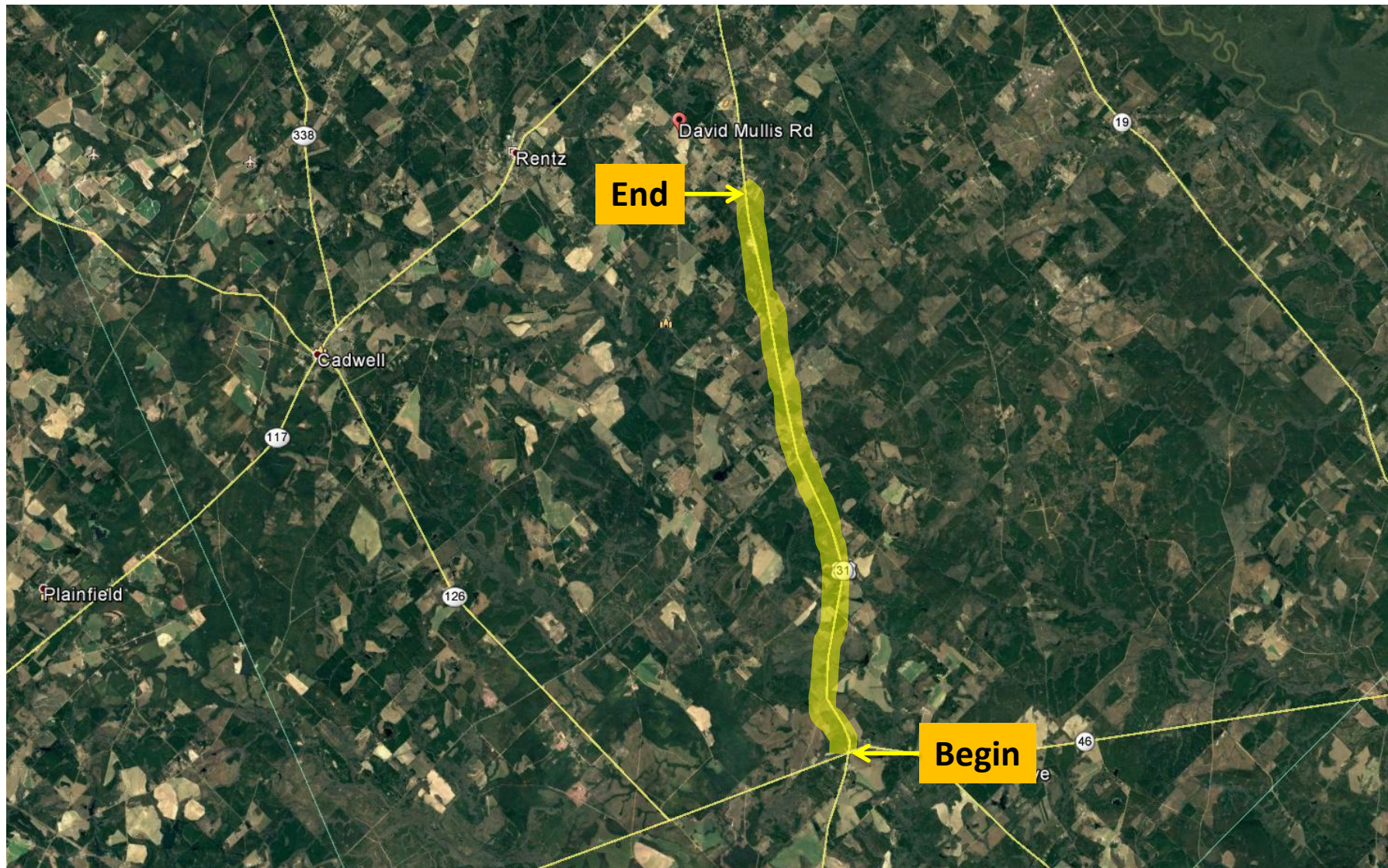


US 441 Location





SR 31/US 441 FROM SR 46 TO CR 272/DAVID MULLIS ROAD Widening Project in Laurens County Congressional District 12



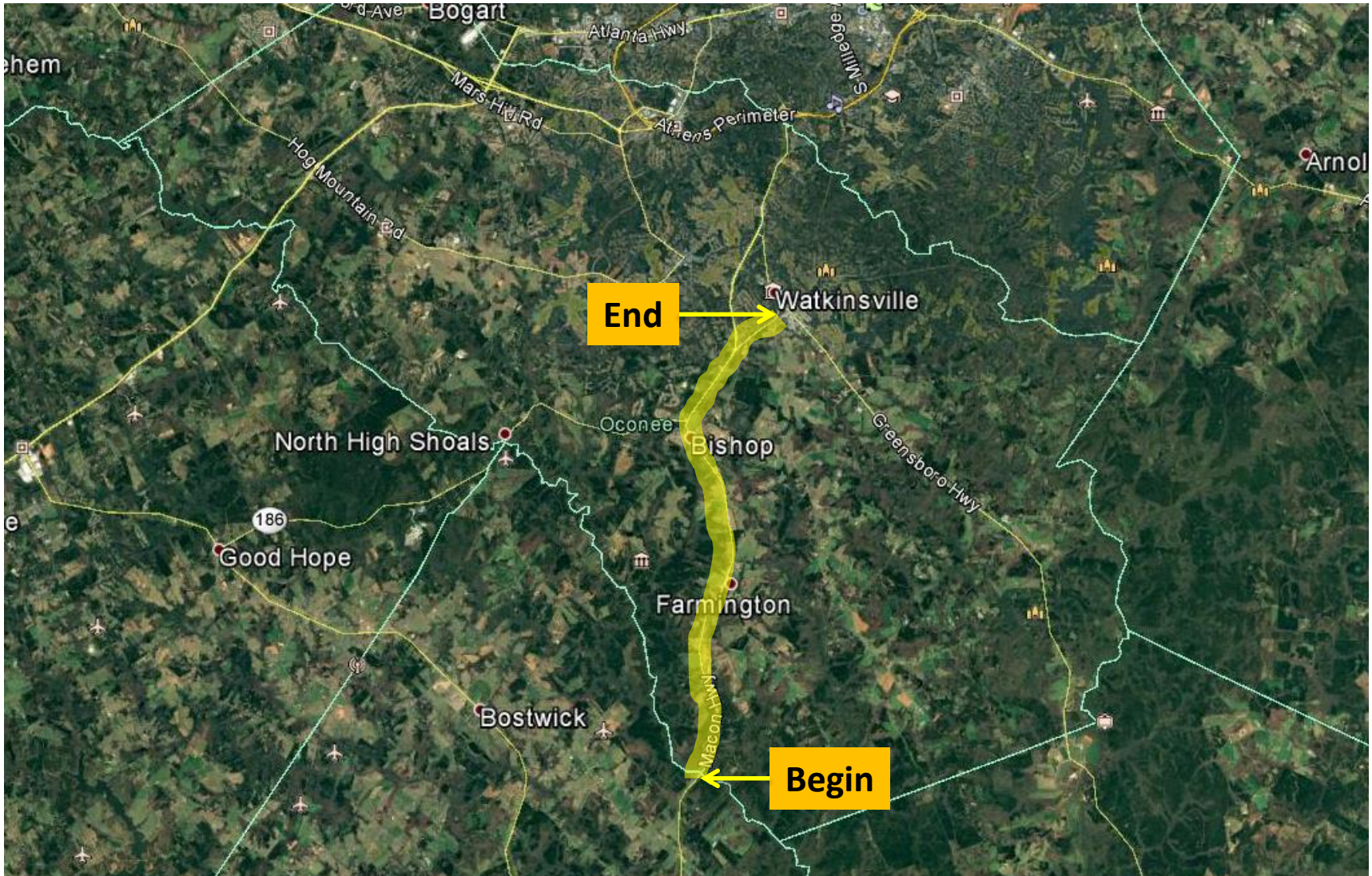


SR 31/US 441 FROM S OF SR 117 TO I-16 Widening Project in Laurens County Congressional District 12





SR 24 FM APALACHEE RVR TO CS 7&FM SR 186 TO WATKINSVILLE BYP Widening Project in Oconee County Congressional District 10





SR 24/US 441 FROM EATONTON BYPASS TO MORGAN COUNTY LINE

Widening Project in Putnam County

Congressional District 10

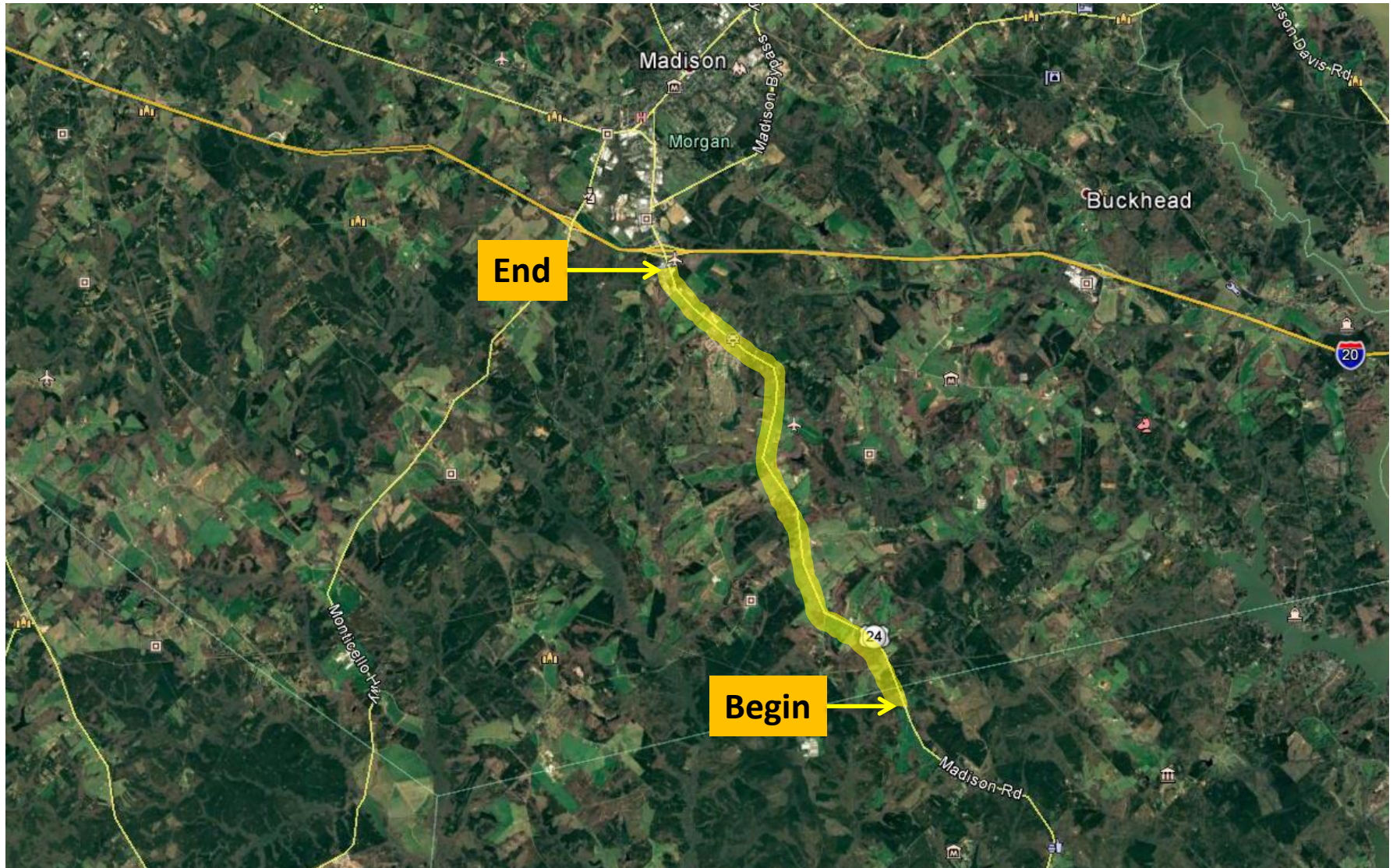




SR 24/US 441 FM PUTNAM CO LN TO N OF CS 646/PIERCE DAIRY RD

Widening Project in Morgan County

Congressional District 10

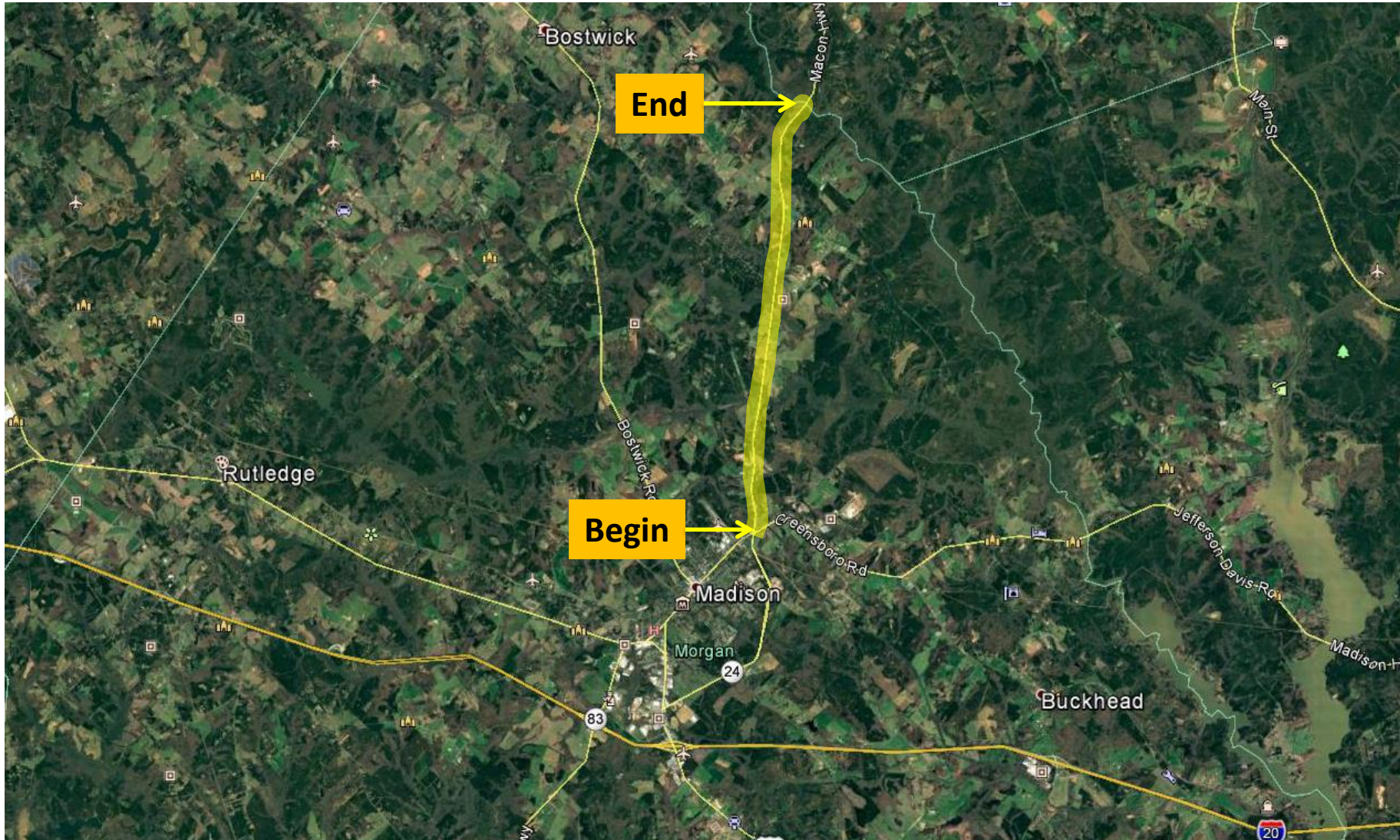




SR 24 FM MADISON BYPASS/MORGAN TO N OF APALACHEE RVR/OCONEE

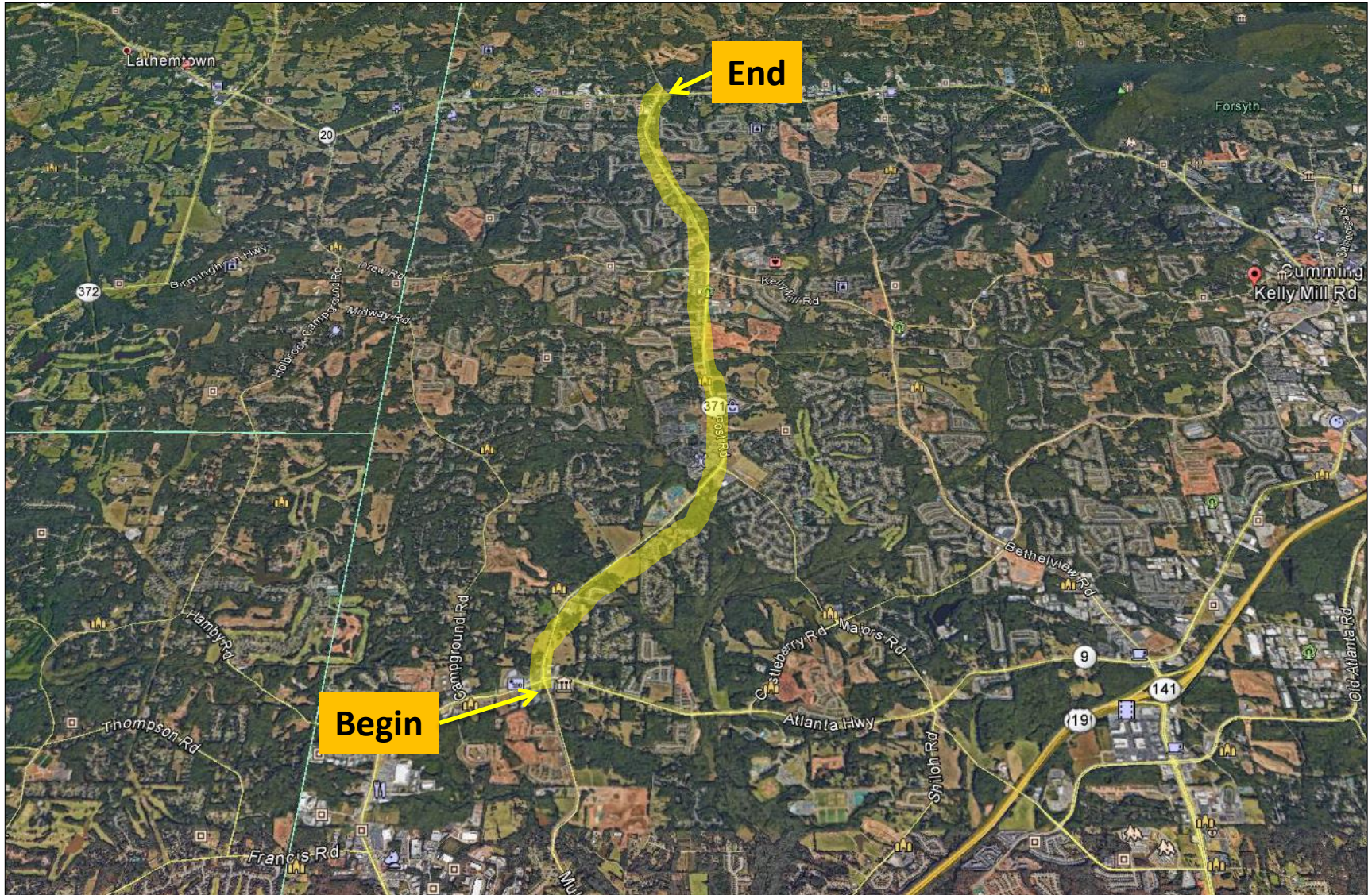
Widening Project in Morgan and Oconee Counties

Congressional District 10





SR 15/US 441 FM NORTH CL/CLAYTON TO NORTH CAROLINA LINE Widening Project in Rabun County Congressional District 9





ROME-CARTERSVILLE DEVELOPMENT CORRIDOR

CORRIDOR FACTS

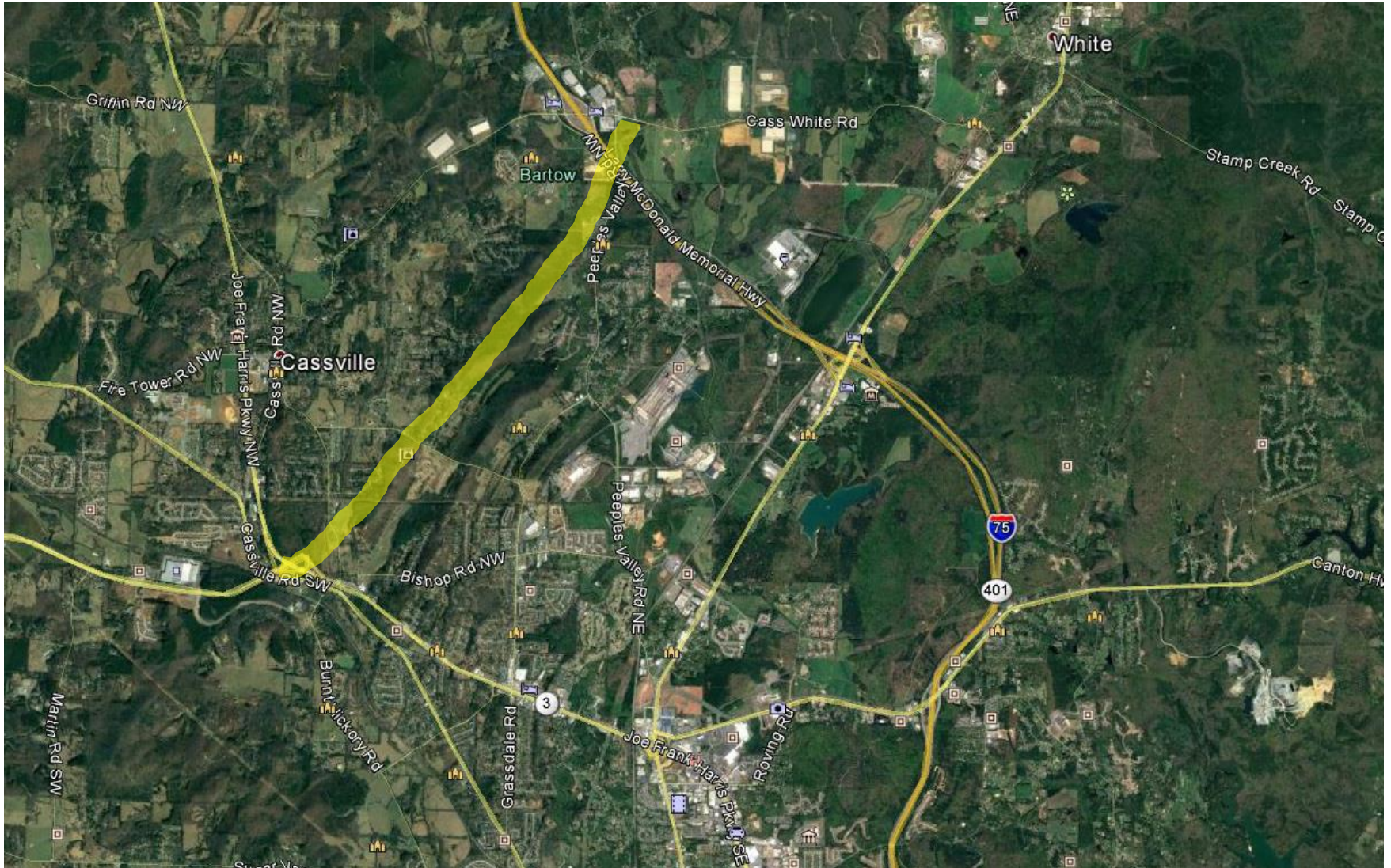
- ◆ The completed project will provide **4-lanes** of roadway.
- ◆ The Rome – Cartersville Development Corridor is approximately **7 miles** in length.
- ◆ The current estimated cost to complete the four-lane construction of the Rome – Cartersville Development Corridor is **\$ 119,945,124**



ROME-CARTERSVILLE DEVELOPMENT CORRIDOR

New Location Project in Bartow County

Congressional District 11





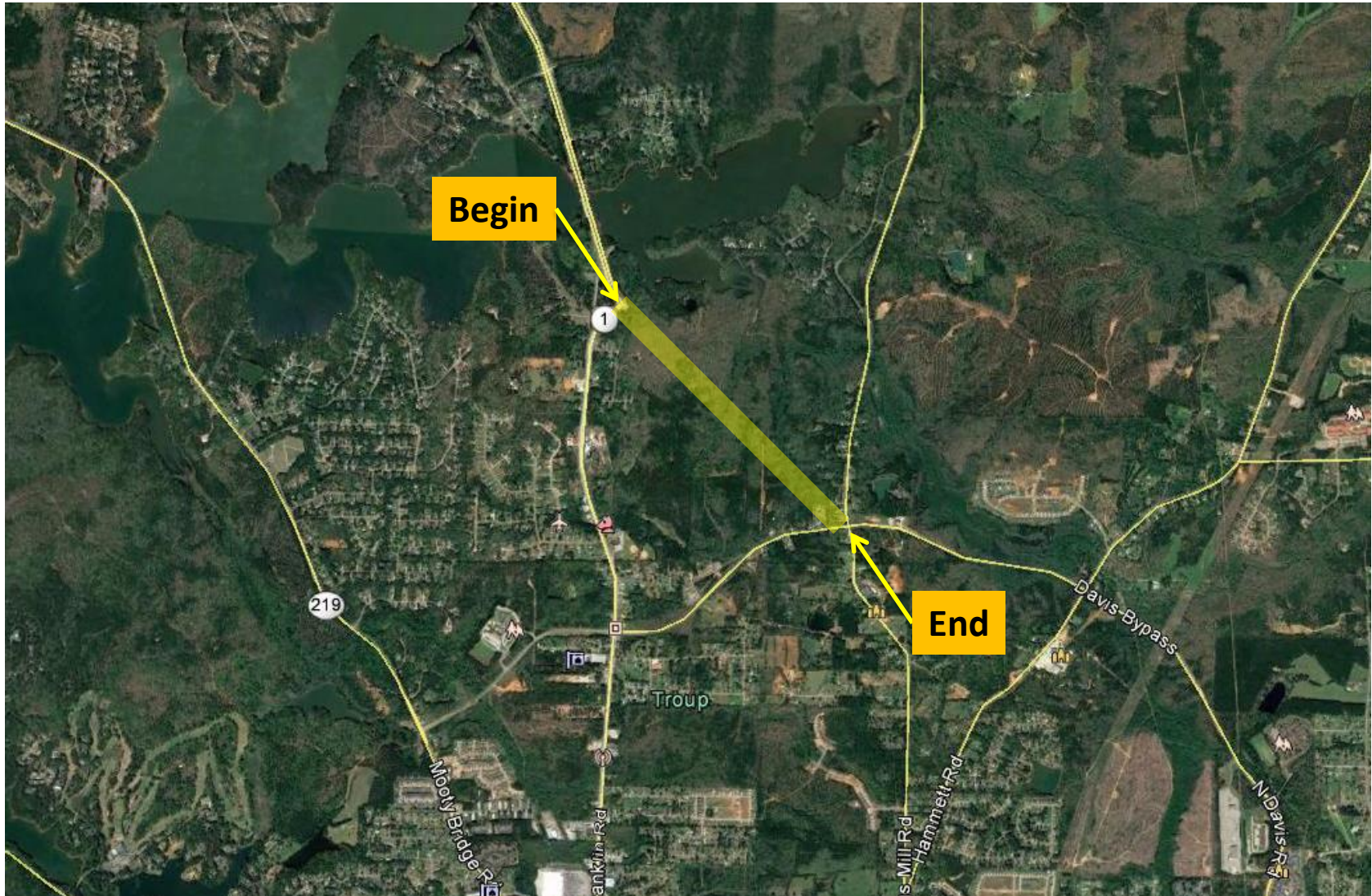
Other Projects of Interest

BRAMPTON ROAD CONN FROM SR 21/SR 25 TO SR 21 SPUR New Location Road Project in Chatham County Congressional District 1

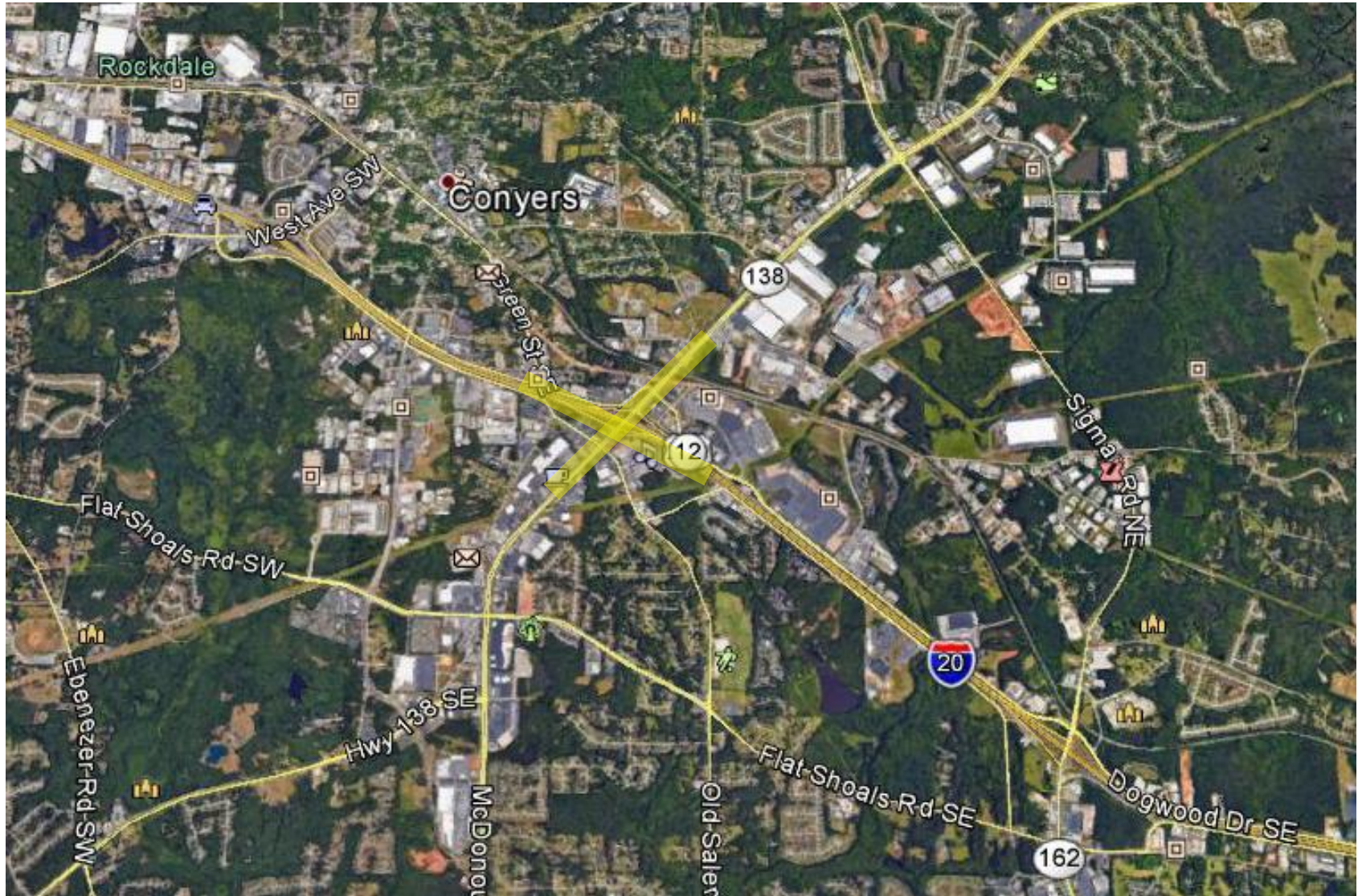




LAGRANGE BYPASS FROM CR 282/YOUNGS MILL ROAD TO SR 1/US 27 New Location Road Project in Troup County Congressional District 3



I-20 @ SR 138/SR 20 INTERCHANGE RECONSTRUCTION & WIDENING Interchange Project in Rockdale County Congressional District 4



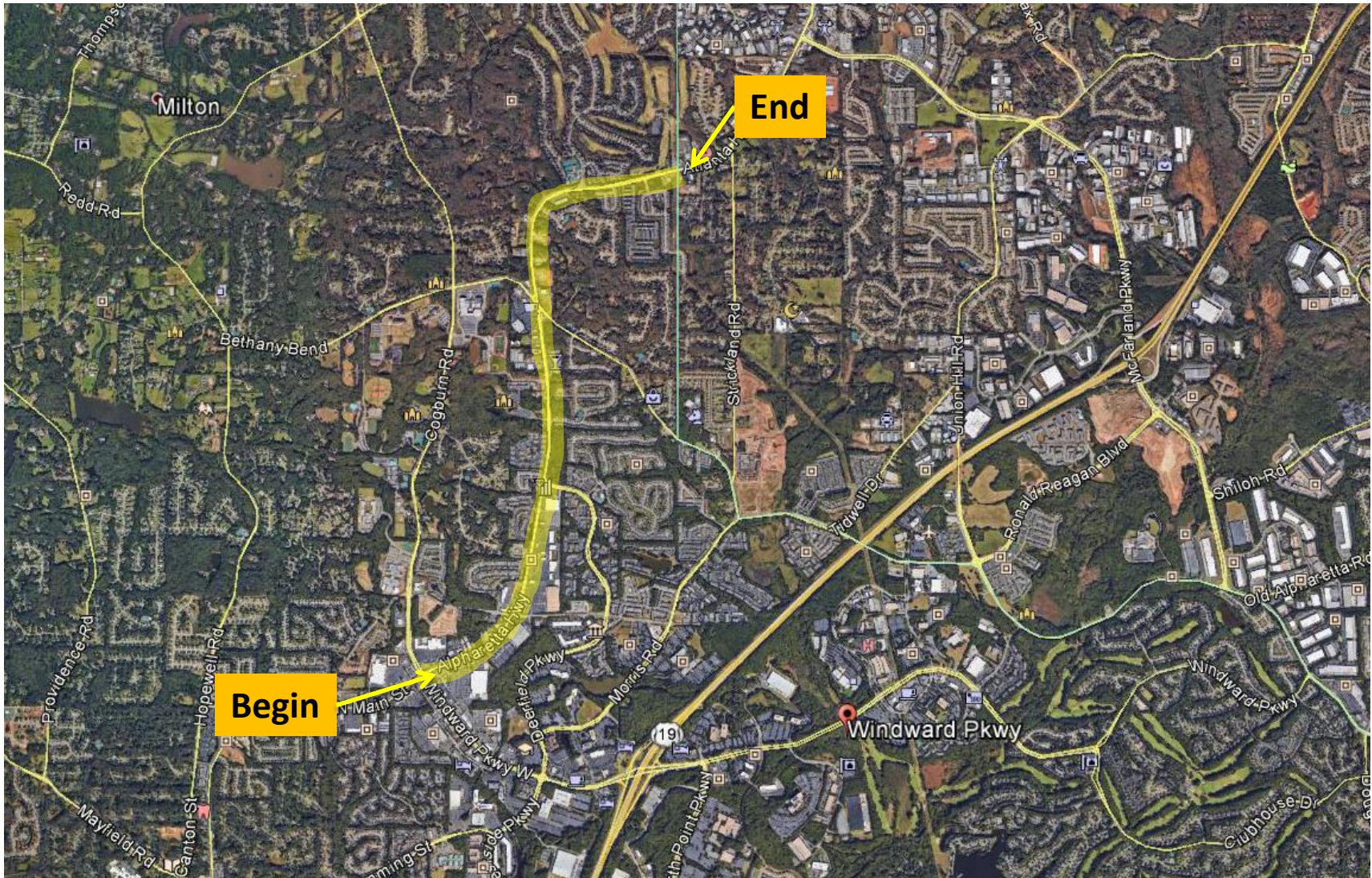
SR 42 FROM 0.15 MI S OF SR 138/HENRY TO I-675/CLAYTON Widening Project in Clayton and Henry Counties Congressional District 5 and 13



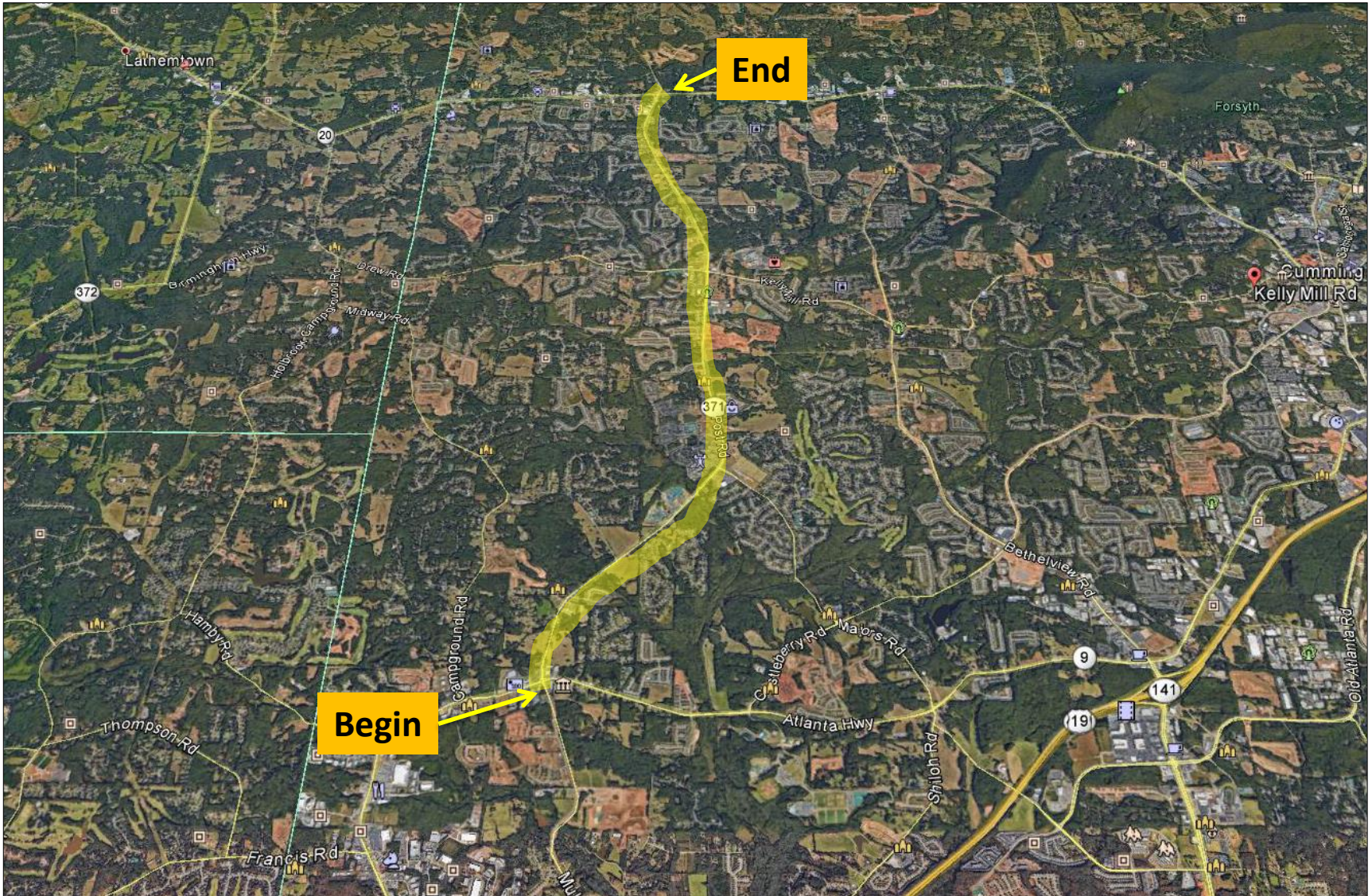
SR 9 FROM WINDWARD PKWY TO FORSYTH COUNTY LINE

Widening Project in Fulton County

Congressional District 6



SR 371 FROM SR 9 TO CR 5/KELLY MILL ROAD Widening Project in Forsyth County Congressional District 7



SR 44 FROM CR 54/LINGER LONGER RD TO EAST GREENSBORO BYPASS Widening Project in Greene County Congressional District 10



JONESBORO RD FM W OF SR 3/US 41/CLAYTON TO I-75/HENRY Widening Project in Henry County Congressional District 13

